

Legal Research Groups and STEP

International Council Meeting
Constanta, Romania

21 October 2019

elsa

The European Law Students' Association

What is an LRG – the AA perspective

- A group of **students**
- **Researching** a specific topic
- To make their findings **publicly available**

elsa

The European Law Students' Association

What can you learn from AA?

Human resources management

- How to coordinate the research project

Project management

- The phases and timelining of the research project

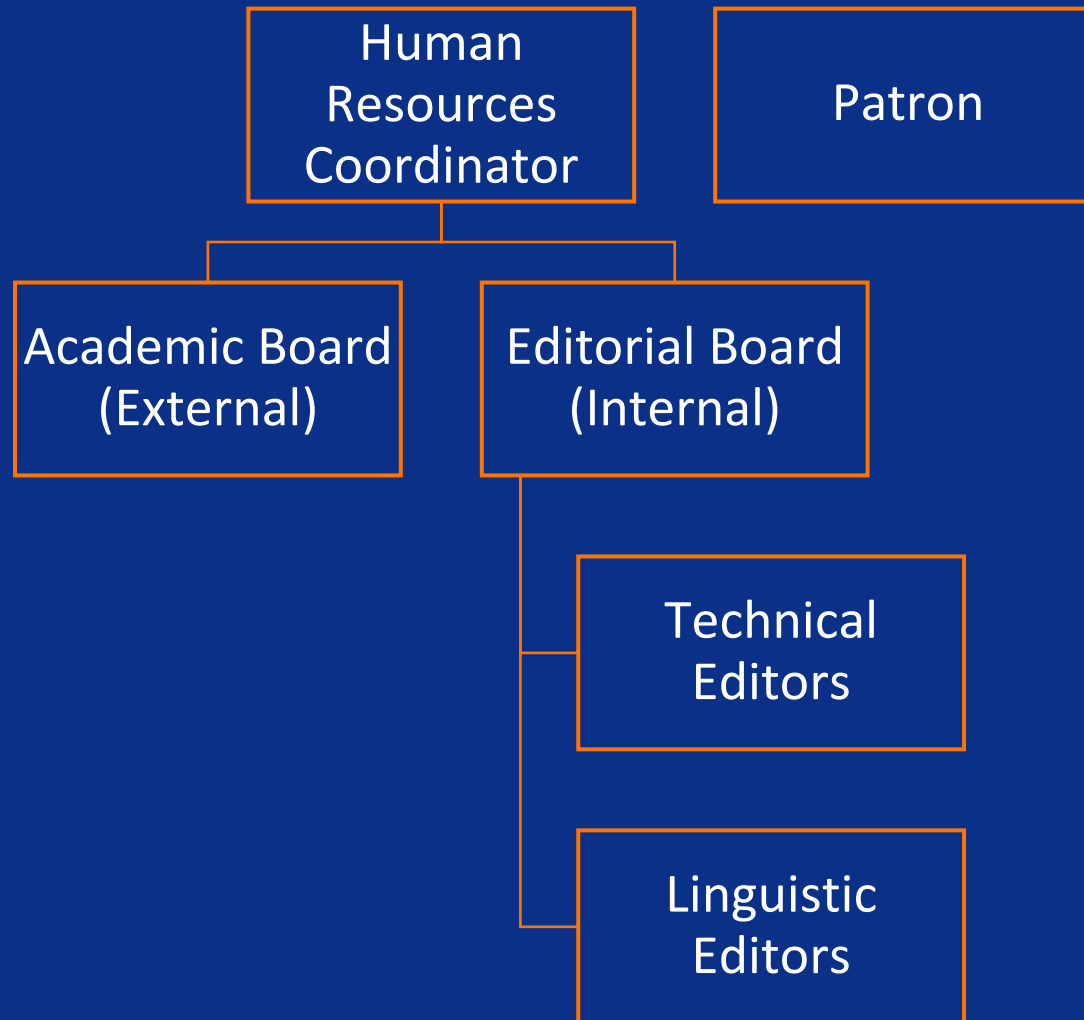
elsa

The European Law Students' Association

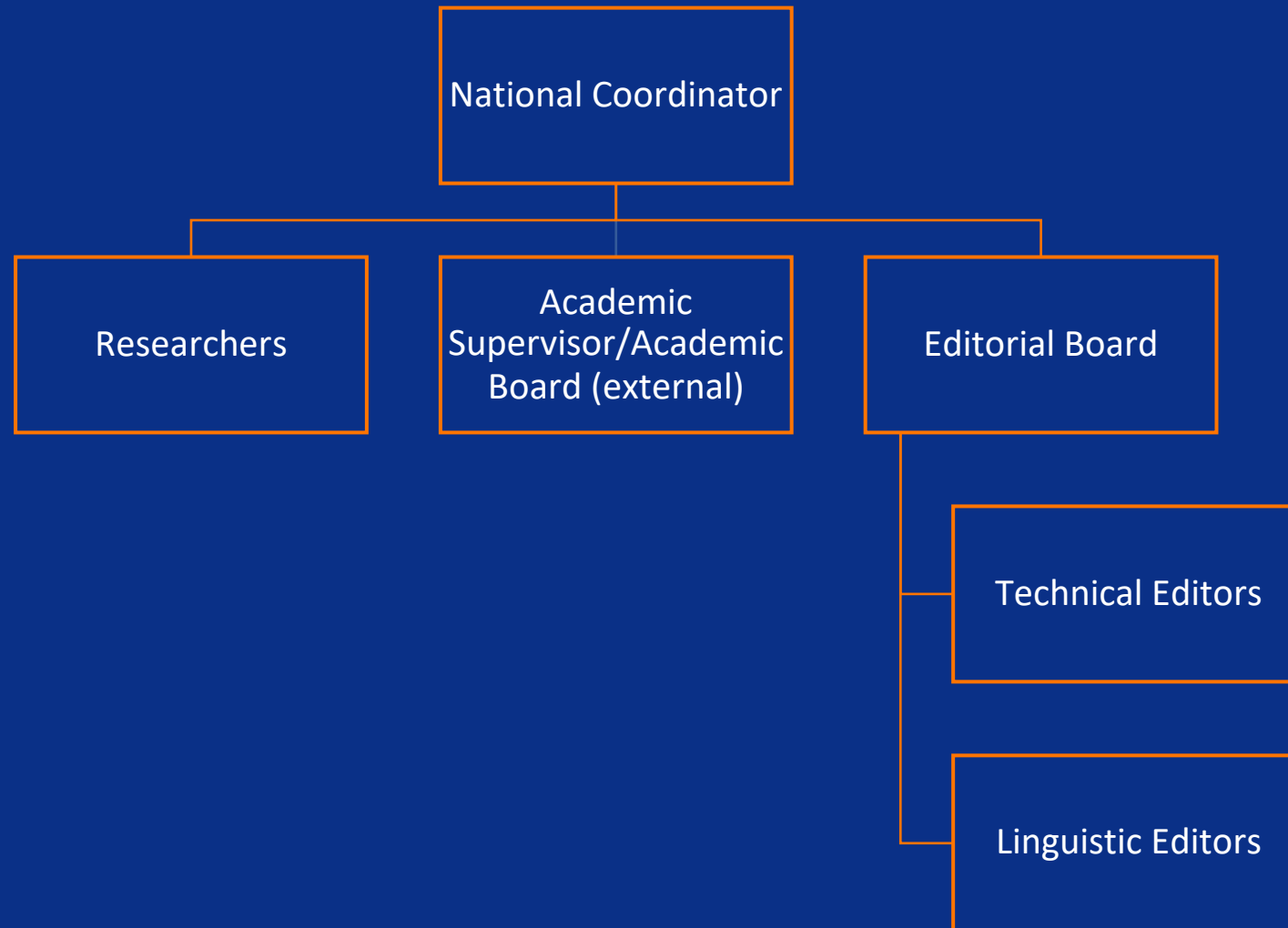
The HR structure



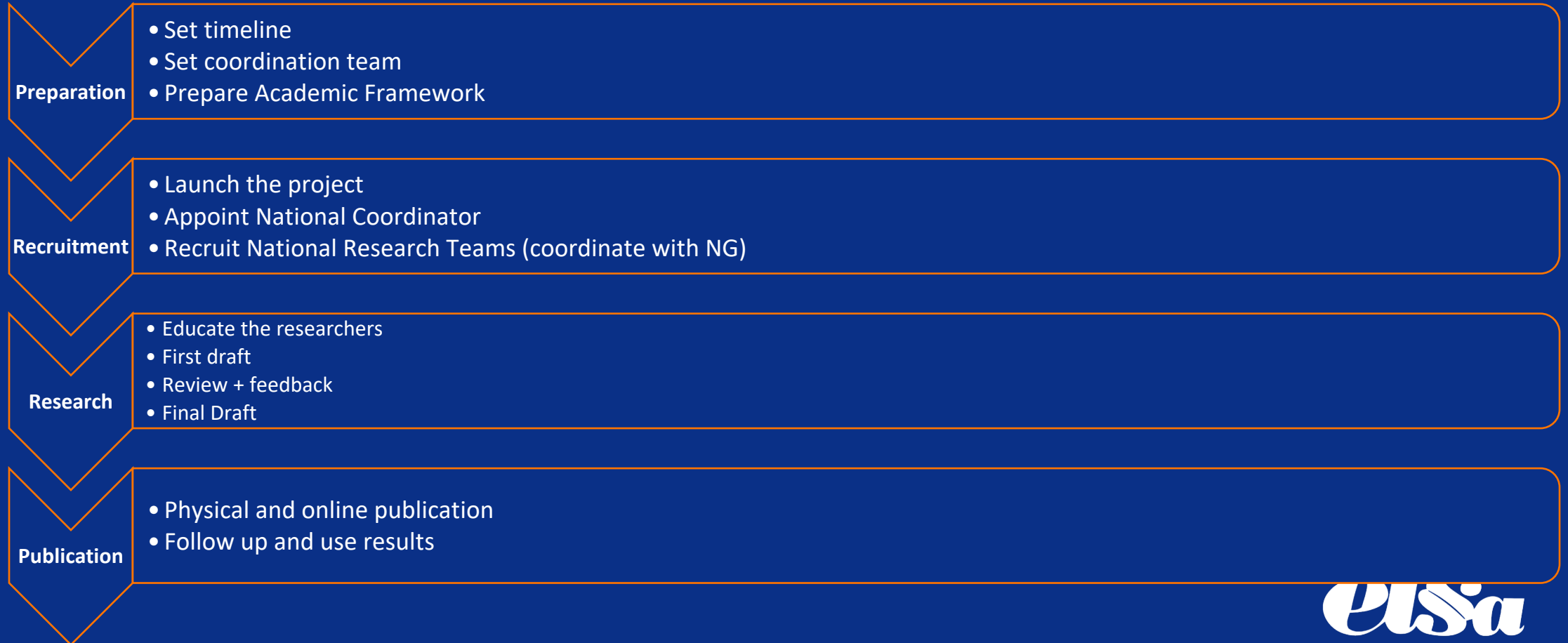
International Coordination Team



National Research Team



Timelining

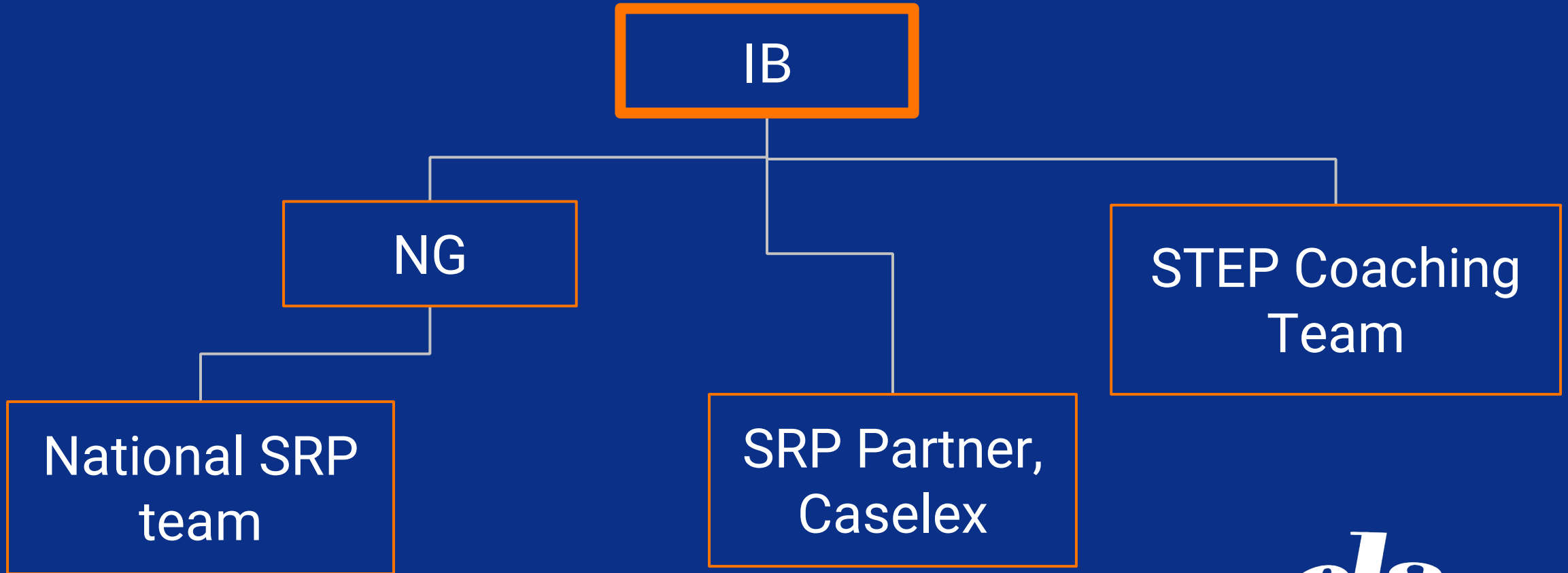


STEP Research Project (SRP)

<i>What?</i>	<ul style="list-style-type: none">● “International legal research group”
<i>Why?</i>	<ul style="list-style-type: none">● To address the legal loopholes affecting STEP● To ensure STEP complies with all the applicable labour laws and standards across the Network
<i>When?</i>	<ul style="list-style-type: none">● Now → Autumn 2021
<i>Whom?</i>	<ul style="list-style-type: none">● STEP Officers all across the Network
<i>With?</i>	<ul style="list-style-type: none">● Caselex, i.e. ELSA’s SRP Partner● ELSA Alumni● STEP Coaching Team



SRP structure



SRP timeline

2019	2020	2021
<p>Oct: Planning w/ Caselex</p> <p>Nov-Dec: Preparing the Network</p>	<p>Jan: <u>Start!</u></p> <p>Mar: Mid-report</p> <p>Jun: First drafts</p> <p>Oct/Nov: Review + amendments</p>	<p>Mar/Apr: Mid-report</p> <p>Jun: Final report</p>

The logo for the European Law Students' Association (elsa) is displayed in a white, lowercase, serif font.

Team up!

- What is/can the SRP used for as a **tool**?
- Which **human resources model** would work for the SRP?
- What **timeline** would work for the SRP?

elsa

The European Law Students' Association